



Own your data. **Orchestrate everything.**

Manufacturer Global Footprint



Sub Saharan Africa

West Africa

Eastern Europe

Western Europe

North America

Asia

Middle East

A Certified & Compliant Business



SOC 2 Compliant

SOC 2 ensures that a company's information security measures are in line with the unique parameters of today's cloud requirements.



EN ISO/IEC 27001_2013

Information Security Management System



EN ISO 9001:2015

Quality Management System



EN ISO 20000-1:2011

Service Management System Requirements



Product Information



Tracking Data

Product Highlights

01.

AFFECTLI is the award winning flagship product of Mi-C3 International that was designed to revolutionise the way businesses operate through an innovative Human Centric Digital Transformation solution that was designed to support humans to enable them to be more efficient and collaborative within the workplace.

02.

AFFECTLI is a cutting edge operational efficiency solution that is ISO certified and GDPR Compliant and provides for Big Data Analytics and Digitised Process Automation combining science and technology through Artificial Intelligence and Contextual Collaboration to monitor and predict behaviour, while collecting data from IoT endpoints, feeding real-time response onto your own secure Cloud platform.

03.

AFFECTLI is designed for seamless, dynamic information sharing, and enables strategic collaboration across all areas of the organisation's ecosystem in real-time, making people and organisations more effective.



Product Highlights

04.

As a standard feature of AFFECTLI, we collaborate with our Customers to create Digital Twins of their organisation by applying semantic ontologies for an effective, real-time overview of the environment that is drillable down into granular detail, thereby providing critical information from systems, devices and data, allowing all these disparate elements of an organisation to work together in one operating system, and as a result, create meaningful intelligence to support business decisions.

05.

AFFECTLI is a unique combination of fully integrated features that enables businesses to generate efficiencies which result in a rapid Return On Investment and the Platform has proven to be especially valuable in highly complex multiple-signal environments spanning a broad geographical range.

Operating Models

Own your data. **Orchestrate everything.**



On-Premises

Applications

Data

Runtime

Middleware

O/S

Virtualisation

Servers

Storage

Networking



PaaS

Platform as a Service

Applications

Data

Runtime

Middleware

O/S

Virtualisation

Servers

Storage

Networking



SaaS

Software as a Service

Applications

Data

Runtime

Middleware


O/S

Virtualisation

Servers

Storage

Networking

 You Manage

 We Manage

Global Operation Management: Multi-Tenancy



Micro-Service Architecture

Intelligence
Maps
+ Situational Awareness

A-Box
+ A-Live
Orchestration
Contextual Collaboration

Designer
Apps & Custom Forms
MarketPlace

Mi-Stream
API Integration
Device &
Information Management

Big Data Analytics
& Visualisation

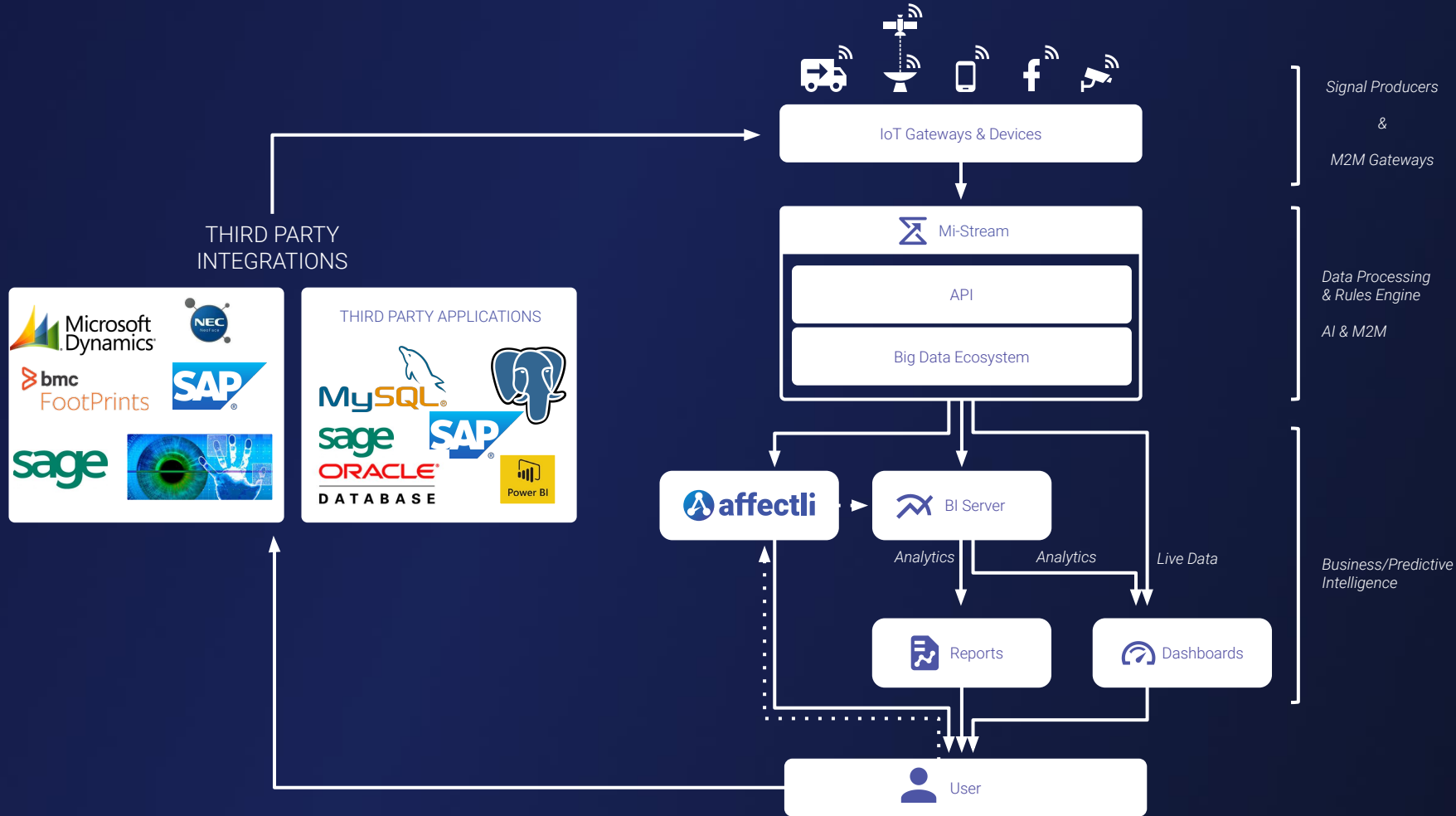
Enterprise
Collaboration

Process Engine
iBPMN

B.O.S
AI & Machine Learning

IoT Endpoints
Agents, Things
Devices & Gateways

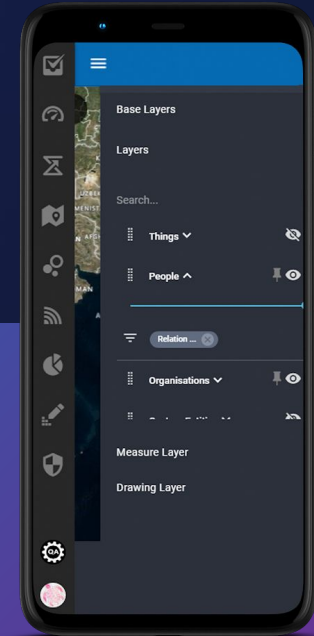
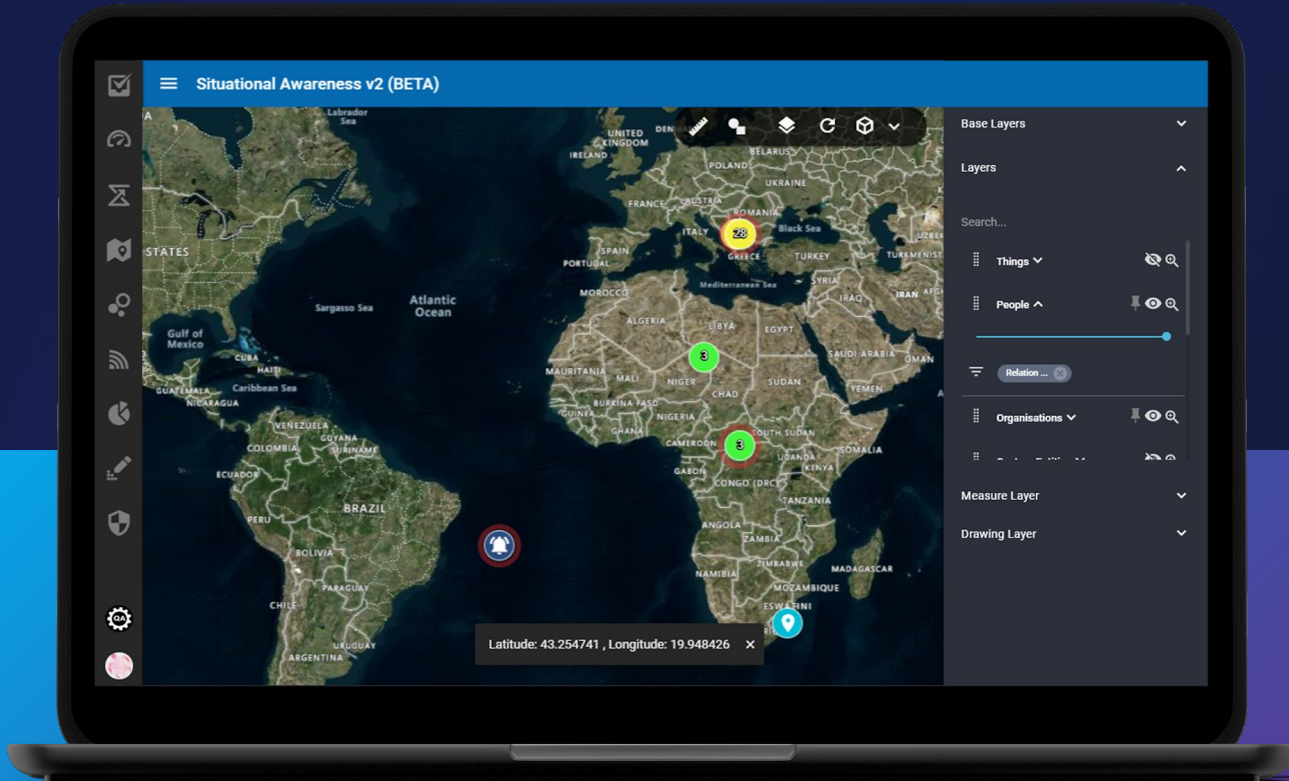






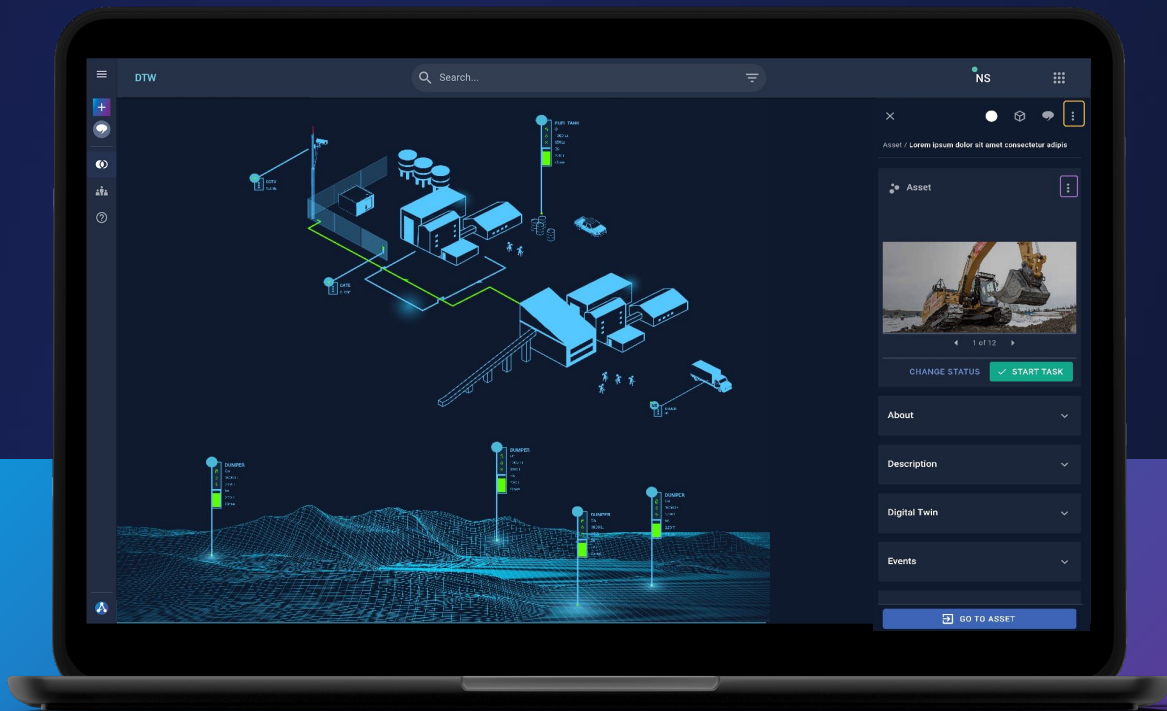
Data Visualization

Geographical Visualisation



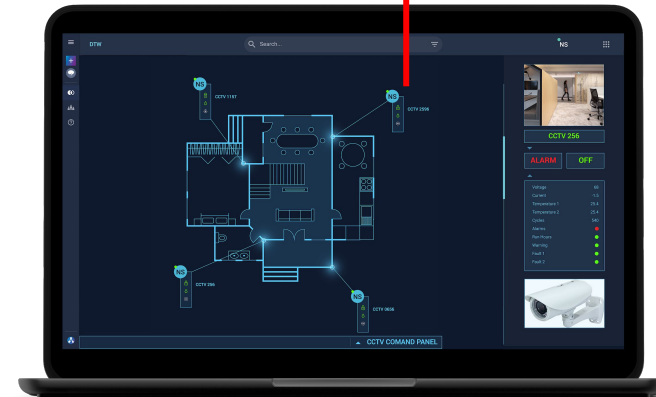
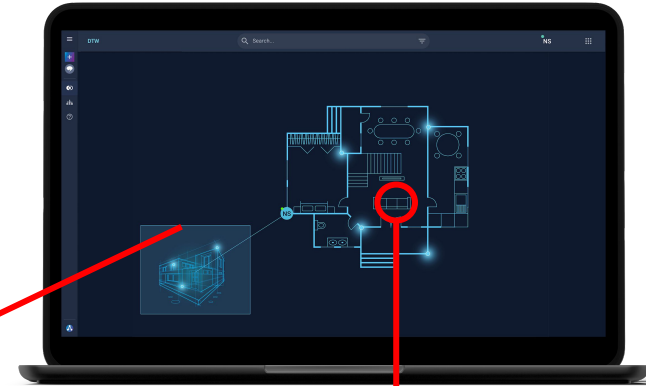
Digital Twins

Gartner predicts that by 2021, half of large industrial companies will use digital twins, resulting in those organisations gaining a 10% improvement in effectiveness



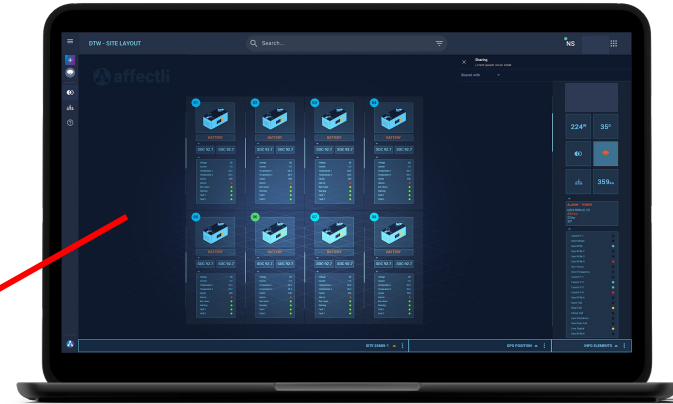
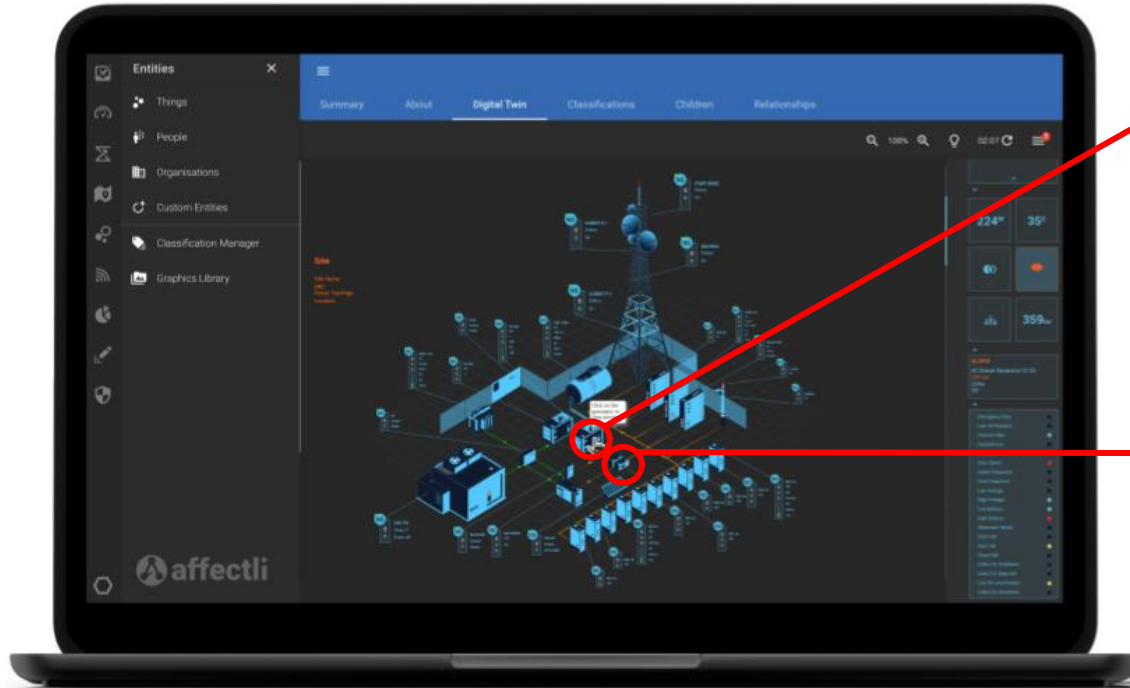
Digital Twins

Drillable: floor plans & devices

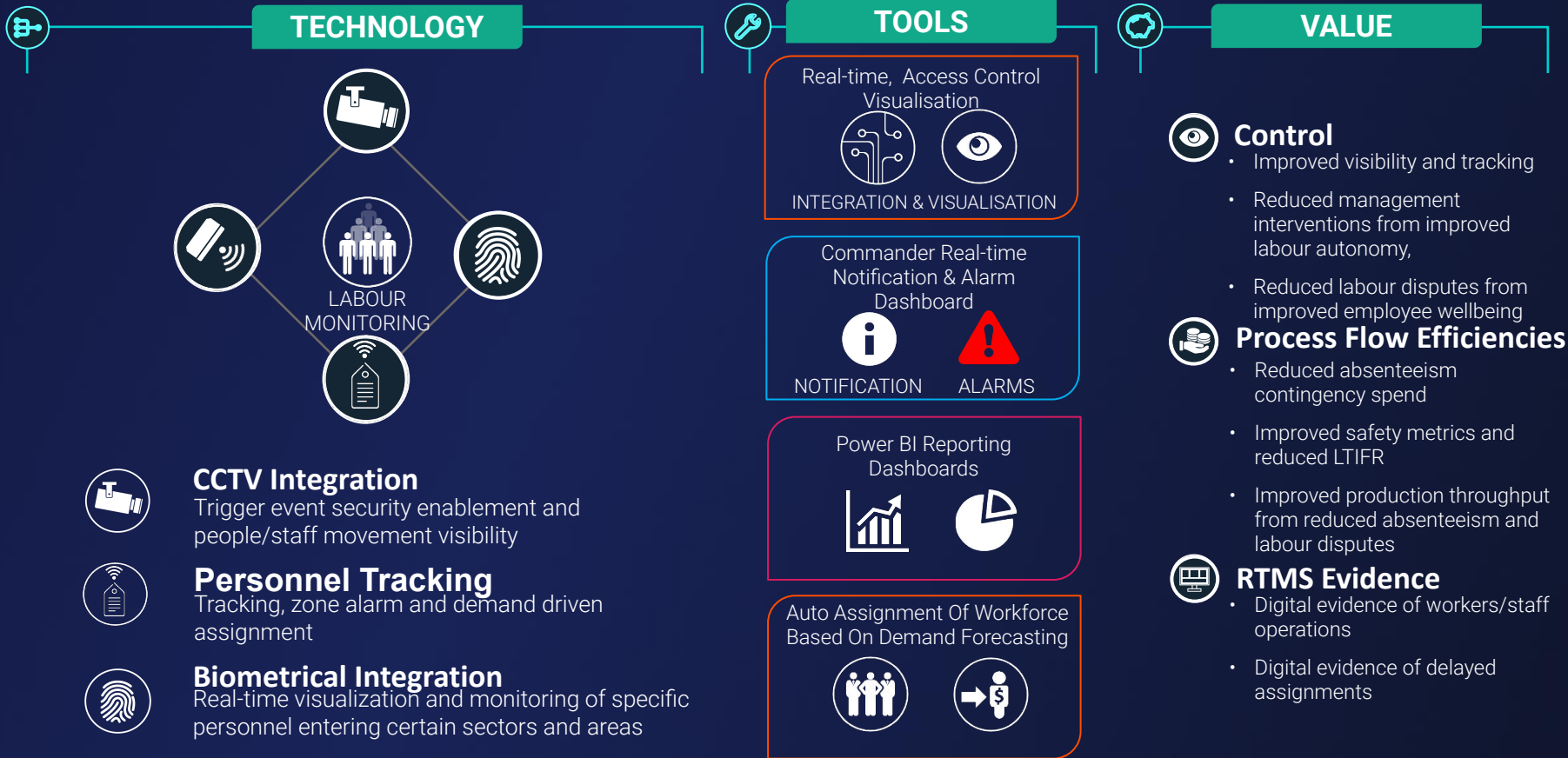


Digital Twins

Drillable: multiple components & layers



Workforce Management



Workforce Management & Scheduling

EMPLOYEES

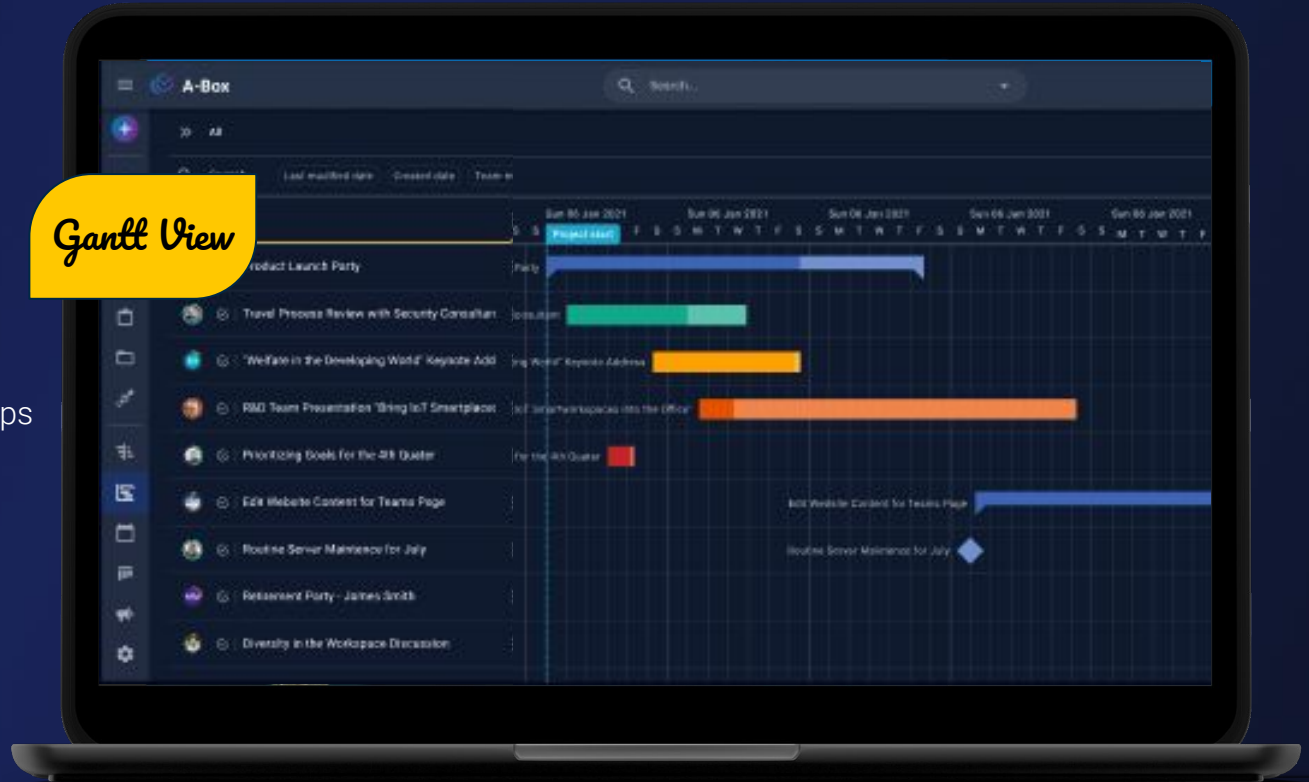
- HR Management
- Accountability
- Access Permission Control
- Time Management
- Accountability
- Roster Management
- Hour Management
- Access - Permissions and Groups

INVENTORY

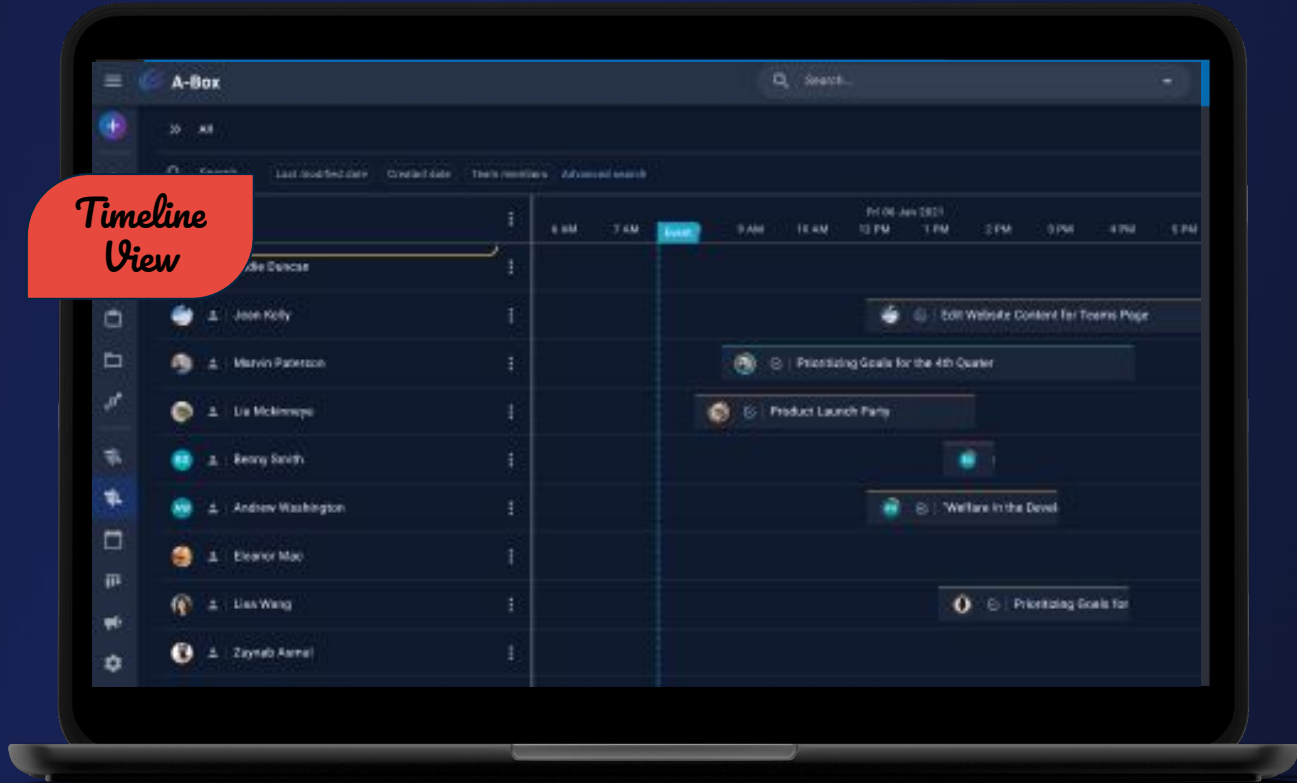
- Accountability
- Sales / Procurement

ASSETS

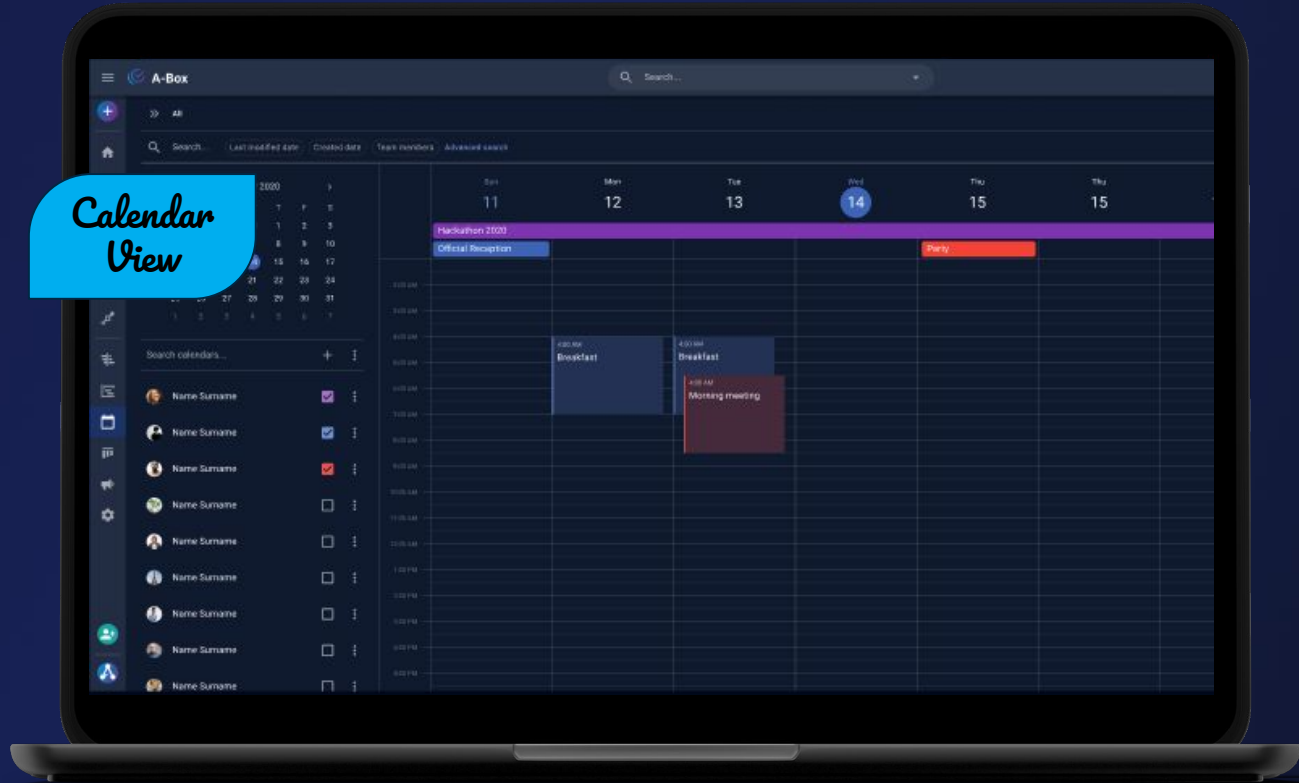
- Driver behaviour
- Tracking & Geofencing
- Logistics Management
- Control



Workforce Management & Scheduling



Workforce Management & Scheduling



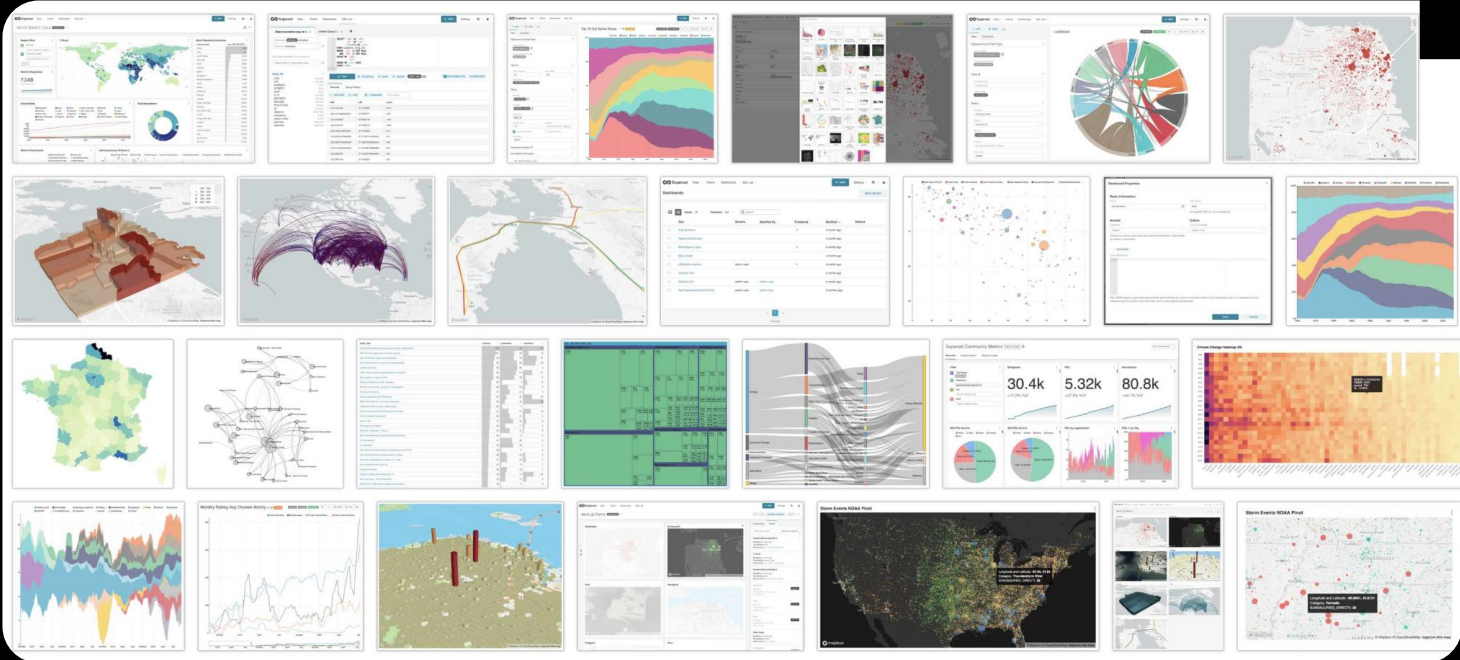
Breathe LIFE into data

affectedli

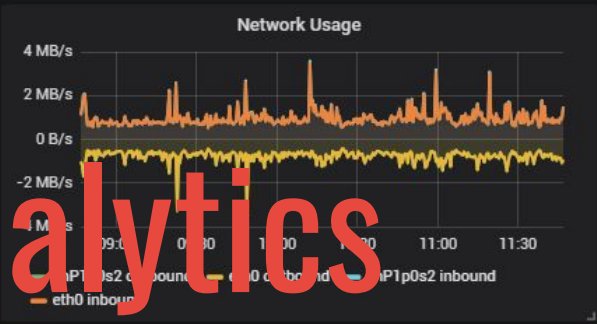
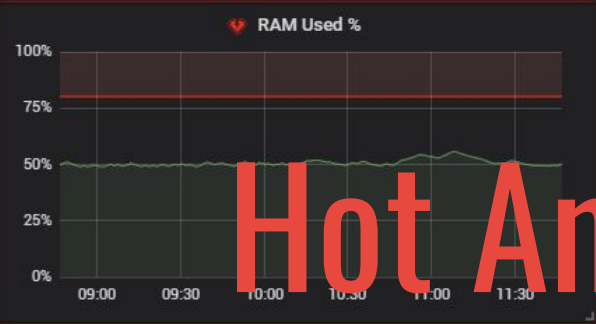
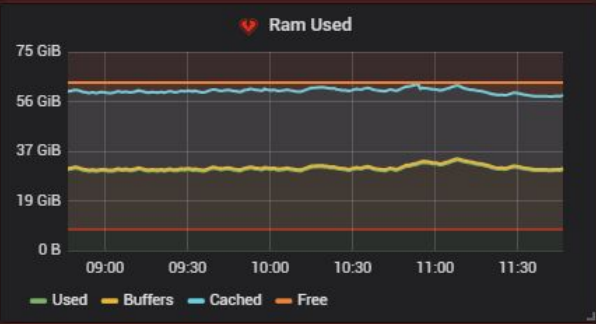
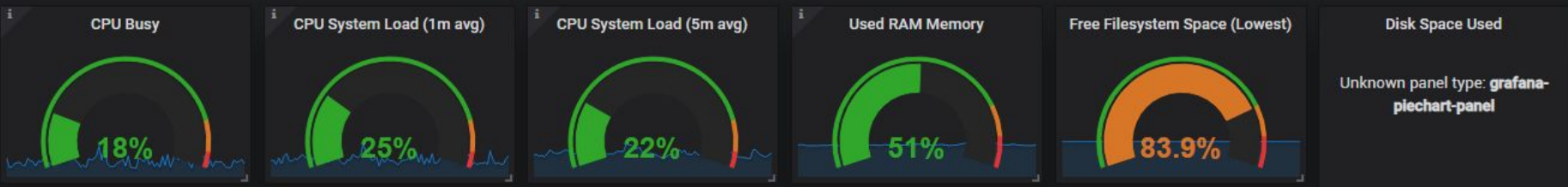
Analytics



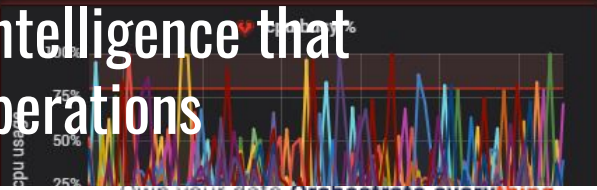
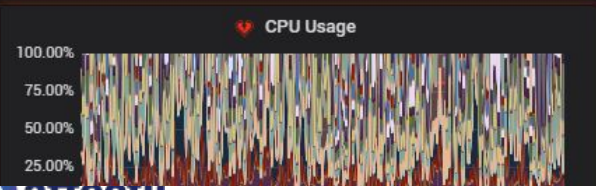
Report Formats & Views



Host Overview



Hot Analytics



Real-time data intelligence that can be used in operations

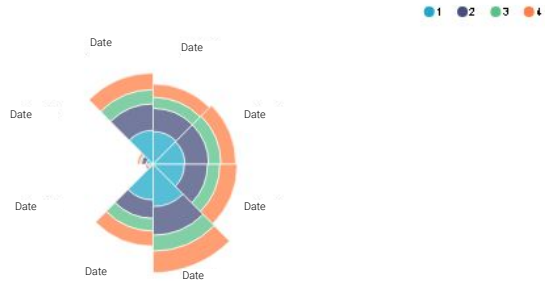
Own your data. **Orchestrate everything.**

Management Overview

Management Overview Draft ☆

EDIT DASHBOARD

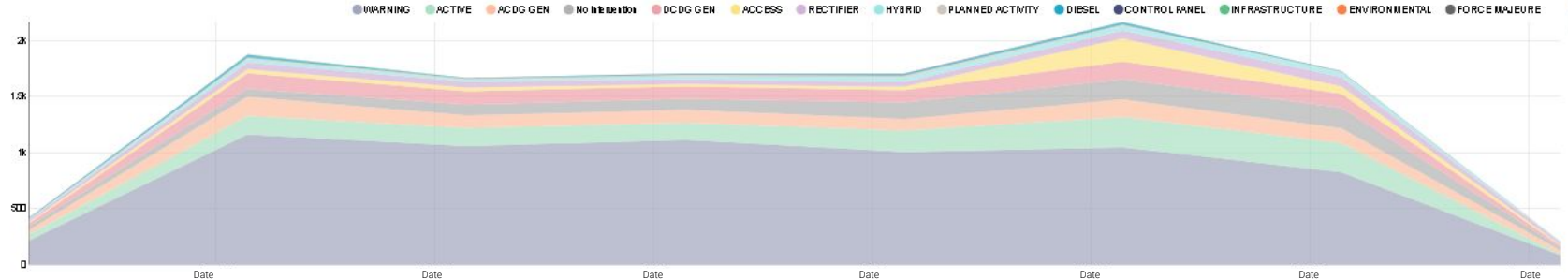
Overview of SITES with **CRITERIA 1** per week:



Overview of SITES with **CRITERIA 1** per week: **CRITERIA 2**



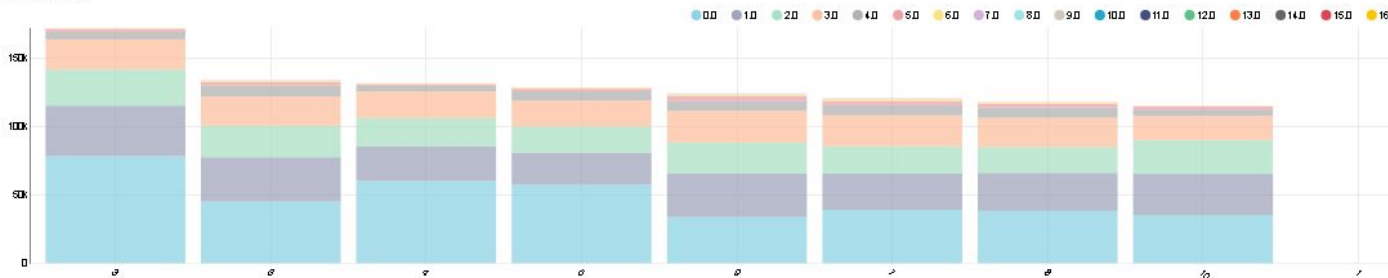
REPETITIVE **PROCESS** Occurrences per Category



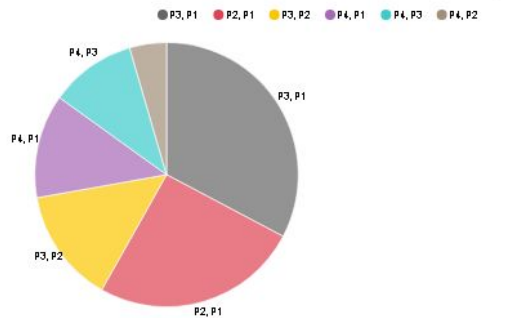
Management Overview

Management Overview Draft ☆

PROCESS1 Frequency



Fault/Victim Priority



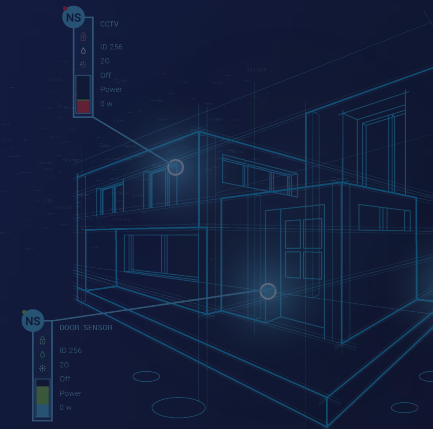
Why **affectli**

- Not a rip & replace solution
- Agile & scalable Technology
- System & Device agnostic
- Orchestrates disparate systems seamlessly
- Delivers a single pane view of the organisation in real-time
- Designed for dynamic information sharing
- Enables strategic collaboration across all areas of the organisation's ecosystem in real-time
- Artificial Intelligence to monitor and predict behaviour
- Collects data from IoT endpoints, feeding real-time response onto your own secure Cloud platform.
- Makes people and organisations more effective

Why **affectli** cont...

AFFECTLI is a unique combination of fully integrated features that enables businesses to generate efficiencies which result in a rapid Return On Investment.

- Digital Twins of assets by applying semantic ontologies
 - for an effective, real-time overview of the environment
 - drillable down into granular detail
 - creates meaningful intelligence to support business decisions.
- Perfectly primed to meet the digital transformation requirements of any organisation
 - Unique ability to adapt behaviour
 - Functioning as an IoT-meets-Smartworkspace platform solution
 - Ability to provide contextual collaboration
 - Superior process compliance
 - Big Data Analytics
 - Digitised Process Automation combining science and technology



AI Business Solution



Use your historical and current data for AI algorithms

Use your vast amounts of process & event / device data.
The next ultimate goal is to use this data to improve efficiencies even further.

AI Business Solution



Predictive Maintenance

Create PPM processes on time - before the sites go down. Avoiding NIMA processes.



Outcome

The AI can suggest when the next PPM date should be performed.



Device Management

Incoming data from a large data field. According to previous behaviour, device management is a useful space for AI application.



Outcome

Device would fail less, as they would be up to date and devices needing replacement would be easily detected.



Workforce Management

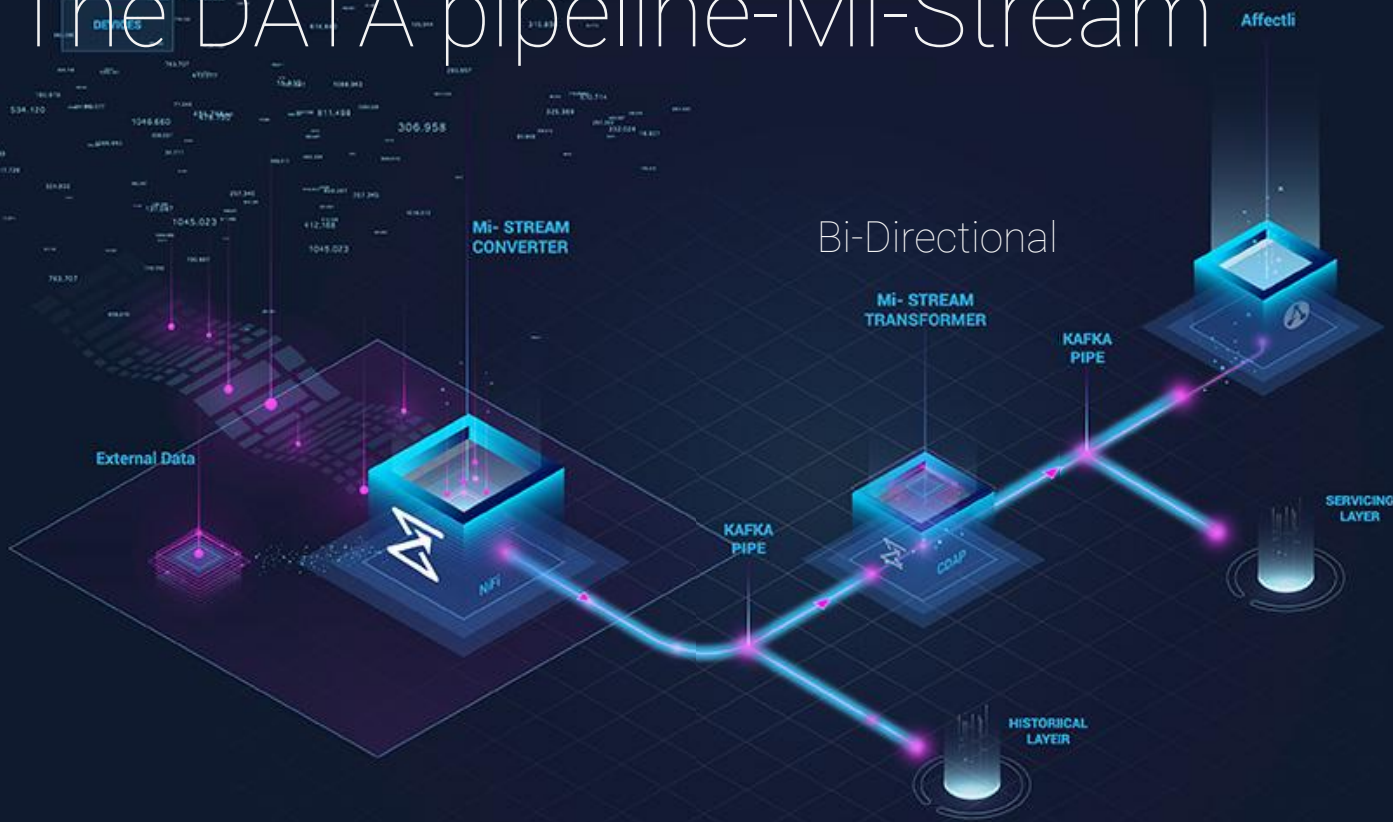
Leave prioritisation for replacement staff. Or you could see for instance that employee A performs badly every February. And offer leave to them over that time.



Outcome

Efficient workforce based on applied data.

The DATA pipeline-Mi-Stream



- DISCOVERY
- ACCESS
- INGESTION
- SANITATION
- PROCESSING
- MANAGEMENT
- ETL
- STORAGE
- ANALYTICS
- VISUALISATION

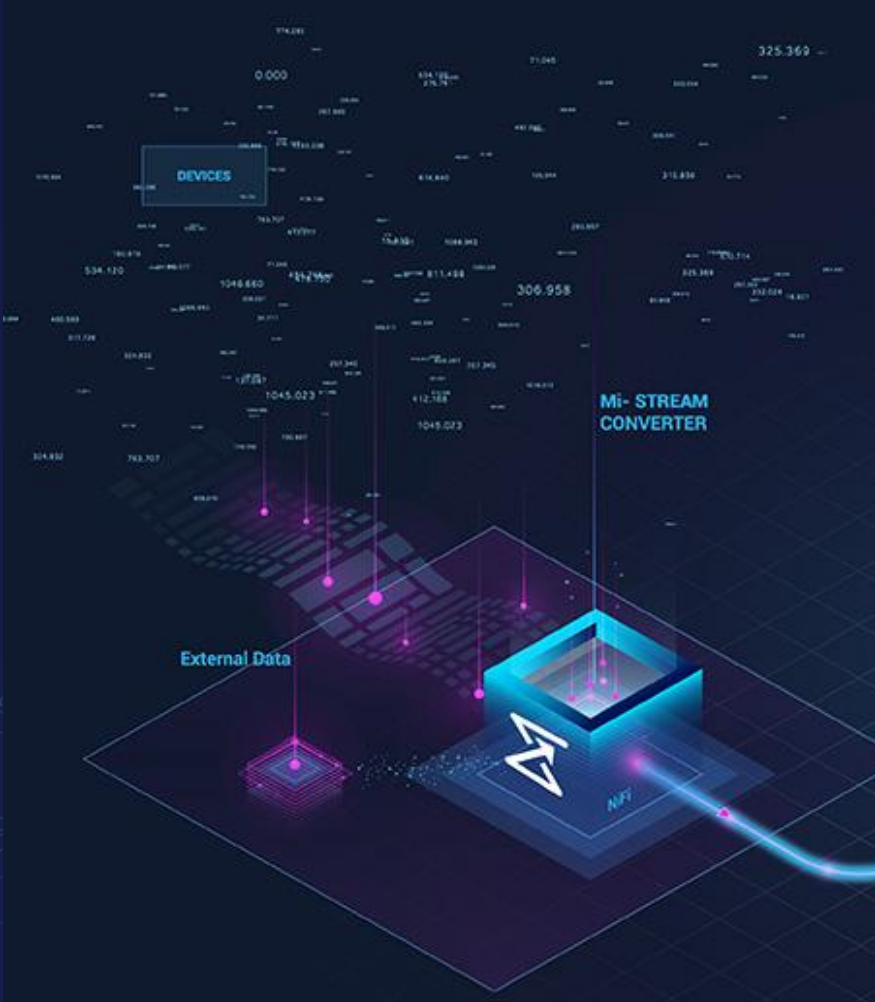


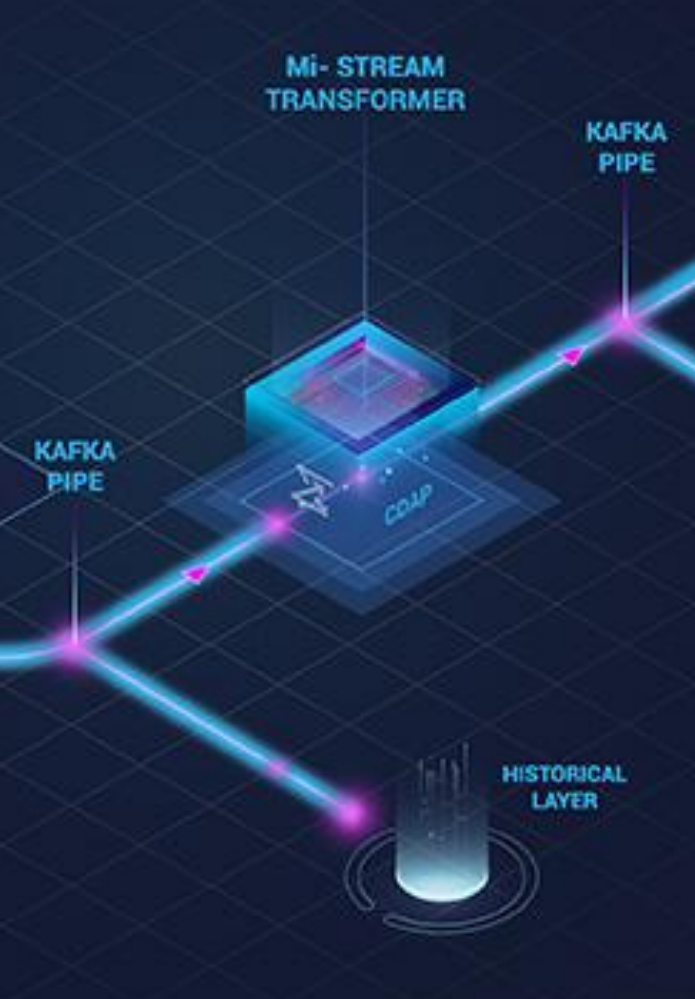
Own your data. **Orchestrate everything.**

Big DATA

Start with data from multiple sources (large volumes - images, spreadsheets, device data, videos, documents, emails and more).

- Devices
- Databases
- External Data





Ingest -> Model -> Transform

Fuse data, Integrate and transform data into a human-centric form

- Enrich
- Map
- Derive Meaningful intelligence
- Connect (relationships)



We thank you for your time
Any questions?

Online details:

<http://www.affectli.com> for product information or

<http://www.mi-c3.com> for company information